



PHILADELPHIA ZOO

3400 West Girard Avenue • Philadelphia, PA 19104-1196
215-243-1100
philadelphiazoo.org

Nonprofit
US Postage
PAID
Philadelphia Zoo
Permit No. 05462



© 2010, Philadelphia Zoo  Printed on recycled paper with environmentally friendly inks. EDU/11/0016

EDUCATOR'S GUIDE
Book your field trip or Zoo On Wheels program today!
Visit philadelphiazoo.org for more information.



PHILADELPHIA ZOO



PHILADELPHIA ZOO

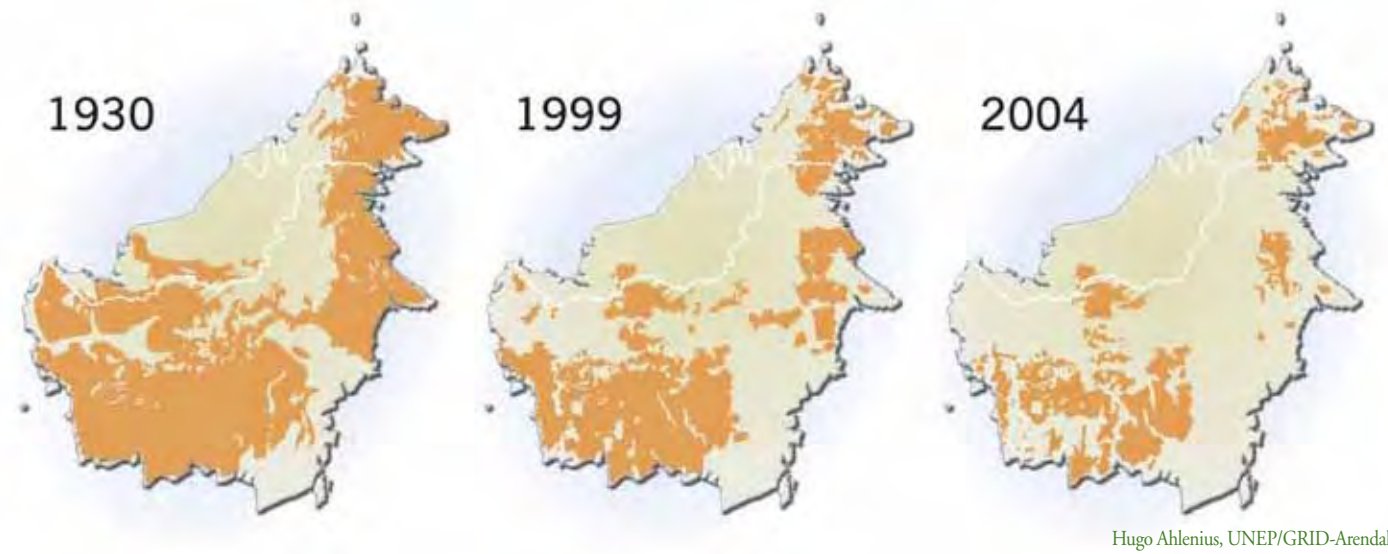
**YOUR PARTNER FOR WILDLIFE DISCOVERY,
CONSERVATION AND ENVIRONMENTAL EDUCATION**



Photo Credit Rob Kroenert/Flickr

philadelphiazoo.org

RANGE MAP OF BORNEO: DECLINE OF ORANGUTAN POPULATIONS



Hugo Ahlenius, UNEP/GRID-Arendal

On the cover: Orangutans are among the largest of all primates. They are also among the most endangered. Both species of orangutans – Sumatran and Bornean – face critical threats due to habitat destruction. Borneo’s forests have been disappearing at an alarming rate due to logging and conversion to palm oil plantations. In order to help save orangutans in the wild, the Philadelphia Zoo is proud to support the Kinabatangan Orang-utan Conservation Project (KOCP) in Borneo.



“Morgan” Golden Lion Tamarin – One of the most endangered primates in the world, golden lion tamarins have lost most of their forest habitat to nearby Rio de Janeiro. Through its groundbreaking Global Conservation Prize, the Philadelphia Zoo supports the work of the Golden Lion Tamarin Association in Brazil which is working to save this highly endangered primate from extinction. Our golden lion tamarins can be found in the Rare Animal Conservation Center.

Dear Educators,

Each and every day, the Philadelphia Zoo works to deepen our impact on the survival of animal species and the places they live around the world. With unprecedented pressures facing wildlife around the globe, it is now more critical than ever to inspire our next generation of wildlife conservation stewards. We believe that through the Zoo experience, whether it be an on-site field trip or our Zoo On Wheels outreach program, we have a unique opportunity to create life-long advocates for wildlife and habitat conservation.

As you read through our offerings in the 2010-2011 Educator’s Guide, you will notice standards-based programs that can be tied directly to your learning objectives. These programs not only provide an enriching cross-curricular experience but also an in-depth discovery of wildlife and their habitats.

You will also notice that throughout the Educator’s Guide, we highlight the numerous wildlife conservation projects the Philadelphia Zoo supports. In addition to caring for over 1,300 animals every day, we work well beyond our 42 acres to help save a wide variety of endangered species. We couldn’t be more excited about sharing this great conservation work with you and your students.

As we embark on the 2010-2011 school year, we look forward to continuing to be your partner as both a destination and a resource for wildlife conservation.

Sincerely,

Kristen Lewis-Waldron

Kristen Lewis-Waldron
Director of Education

SCHOOL GROUP RATES

Peak Season

September through October 2010

April through June 2011

Advance School Group Admission*\$10 per person

Off-peak Season

November 2010 through March 2011

Advance School Group Admission*\$7 per person

*Bus drivers receive free admission to the Zoo. Bus parking is always free. One free chaperone ticket is given per 10 student tickets purchased. Additional chaperone tickets can be purchased at the prices listed above.

TABLE OF CONTENTS

Planning Your Trip2
 Zoo Map3
 Conservation Partnerships.....4
 Animal Profile and Citizen Science5
 Classroom PosterInside Spread
 Early Education Programs (Pre-K to 1) 6-7
 Elementary Education Programs (1 to 6) 8-9
 Middle and High School Programs (6 to 12) 10-11

ZOO HOURS

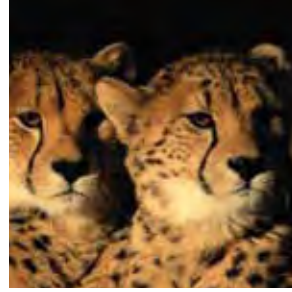
9:30 a.m. to 5:00 p.m. Daily
 March through October

9:30 a.m. to 4:00 p.m. Daily
 November through February

Call 215-243-5235 to schedule your field trip today!
 Visit our Teachers’ Lounge at philadelphiazoo.org for more information.

CONSERVATION PARTNERSHIPS

Matching the diversity of our animal collection, the Philadelphia Zoo is involved in numerous conservation projects worldwide. Listed below and throughout this Educator's Guide are examples of the many partnerships we maintain to help save species in the wild.



Cheetah Conservation Fund — The cheetah, the fastest mammal on land, is capable of sprints up to 70 mph. But due to habitat loss and conflict with humans, it is also the most endangered cat in Africa. The Zoo supports the Cheetah Conservation Fund, headquartered in Namibia, which works to save cheetahs in the wild. Our Curator of Ungulates, Christine Bartos, recently trained a border collie named Finn to detect cheetah scat (poop). Finn now works with CCF in Namibia. The scat he finds supplies critical information about cheetah populations, ranges and diets. Our cheetahs can be found at the South End of the Zoo.



International Rhino Foundation — The greater Asian one-horned rhino is an inspiring story in rhino conservation. Through strict protection by wildlife officials in India and Nepal, these rhinos recovered from fewer than 200 animals in the early 1900's to over 2,700 animals today. However, rhinos still face an uncertain future due to poaching and habitat loss. The International Rhino Foundation, which the Zoo supports, is dedicated to the survival of the world's rhino species through conservation and research. Our Asian rhino can be found at the Pachyderm House.



Ongava Research Centre — The African lion population has declined 30% to 50% over the past 20 years and is listed as "Vulnerable" by the International Union for Conservation of Nature and Natural Resources (IUCN). Conflict with humans remain their top threat. The Zoo is a partner with the Ongava Research Centre in Namibia, which is devoted to the scientific study of many animals that live on the Ongava Game Reserve, including lions. Researchers use traditional observation and census techniques as well as GPS collars to track the movement and social structures of the lions. Our lions can be found in our award-winning Big Cats Falls.



Project Punta San Juan — Humboldt penguins feed in the waters of the Humboldt Current off the Pacific coast of South America. At their on-shore nesting areas, penguins produce huge deposits of droppings (guano) which are "mined" for nitrogen and sold as fertilizer. Uncontrolled guano-mining and overfishing have reduced penguin populations over the past 20 to 30 years. With support of the Zoo, Project Punta San Juan's wildlife biologists monitor a large breeding colony of penguins in Peru. The Zoo has also sent volunteers to Punta San Juan to monitor guano mining and develop local wildlife education programs. Our Humboldt penguins can be found in Bird Valley.



Belize Jaguar Project — Jaguars, the least-studied of all big cats, face numerous threats from conflict with humans to habitat loss. The Zoo supports the Belize Jaguar Project, a long-term study of jaguar ecology and conservation, uses remote camera traps to estimate jaguar population trends and individual movements in four tropical forest areas. These cats now inhabit less than half of their historic range and studies like this one help develop effective conservation strategies. Our jaguars can be found in our award-winning Big Cat Falls.



Giant Otter Project — Several decades of intense fur hunting and habitat degradation in the Amazon have depleted wild populations of giant river otters. The species is listed as "Endangered." Ongoing research is needed to learn how otters are adapting to increased human activity. Wildlife biologist Dr. Fernando Rosas, with help from the Zoo, studies the behavior of river otters around dams in Brazil's Balbina Lake. The Philadelphia Zoo was the first zoo in North America to successfully breed giant river otters. Our otters can be found in Carnivore Kingdom.



All range maps are by the International Union for Conservation of Nature and Natural Resources.

HILADELPHIA ZOO TAKES THE LEAD ON SAVING A SPECIES FROM EXTINCTION



Animal Profile

Micronesian Kingfisher

Hometown

Once native to the island of Guam, this small bird species is now extinct in the wild.

Size/Weight

Micronesian kingfishers are medium-sized kingfishers with a large, strong beak. Approximately 8 inches in length. Adult weights range from approximately 2 to 3 ounces.

Favorite Food

Lizards – also likes insects and occasionally crustaceans and small mammals.

Archenemy

Brown tree snake

Conservation Challenge

- After WWII, Guam's birds began disappearing because of predation by brown tree snakes which had been accidentally introduced to the island.
- To save Guam's endemic bird species from certain extinction, the Philadelphia Zoo partnered with the U.S. Fish and Wildlife Service to form the Guam Bird Rescue Project in 1984.
- The last 29 wild kingfishers were rescued and brought to the U.S. for captive breeding.

- The breeding success in the U.S. has produced enough kingfishers that birds were returned to a captive breeding center on Guam in 2003. The first breeding on Guam in protected aviaries occurred two years later. Work continues on how to reintroduce kingfishers to their wild habitat.

CITIZEN SCIENCE OPPORTUNITY

Join the Philadelphia Zoo and Audubon PA for the Great Backyard Bird Count.

February 18–21, 2011

Students can become the eyes and ears of environmental scientists and help protect native species by participating in this citizen science project.

The Delaware Valley, with its large volume of migratory birds and birds that live here year-round, presents a unique opportunity for students to collect valuable scientific data. Students simply make a list of how many and what kinds of birds they observe in their schoolyard, at home or at a nearby park and then enter their lists online. Information collected by students from all over the United States and Canada is used by scientists to monitor bird ranges and populations. Your students can even take this project a step further – turn your schoolyard or local community into a bird-friendly habitat and complete the Audubon At Home certification.

Email education@phillyzoo.org for instructions on how to get started and for details about birds of the Delaware Valley. Schedule a Zoo On Wheels Beaks and Bills program or take a field trip to the Zoo's McNeil Avian Center to enhance this citizen science project.

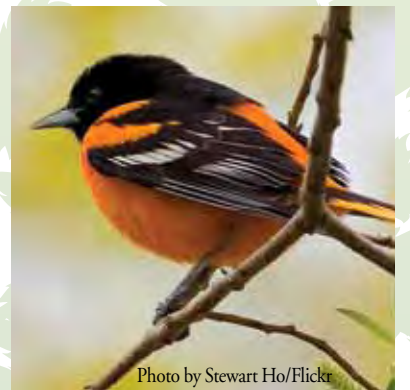


Photo by Stewart Ho/Flickr

Call 215-243-5235 to schedule your field trip today!
Visit our Teachers' Lounge at philadelphiazoo.org for more information.

Early Education programs at the Zoo enhance your field trip experience.

All Early Education programs (Pre-K to 1) include an up-close live animal encounter, except the Animals In Your Neighborhood program held in our Treehouse. Early Education programs are offered Monday through Friday between 10:15 a.m. and 1:00 p.m.

What Am I?

Uncover the mysteries of animal classification through a combination of live animal experiences and engaging activities in this 45-minute program. Whether it's a mammal, bird, reptile or amphibian, discover what features are used to classify an animal.

Core Concepts: classification, senses

PA Standards: 3.1, 3.3

NJ Standards: 5.5, 5.10

DE Standards: Science 6, 7, 8

Animals In Your Neighborhood

(Available September – February)

Whether they are playing opossum or dancing like a bee, students will explore local wildlife through interactive role play. This 20-minute program takes place in Treehouse and is followed by exploration time.

Core Concepts: senses, communication, organisms, environment

PA Standards: 3.1, 3.3,

NJ Standards: 5.5

DE Standards: Science 6, 7



“Cold-i-locks” Polar Bear –
The greatest challenge to polar bear conservation is ecological damage in the Arctic region resulting from climate change. The Zoo is a proud partner of Polar Bears International, an organization dedicated to the worldwide conservation of the polar bear and its habitat through research, stewardship and education. Our two female polar bears can be found in Bear Country.

Customize your program.

Looking for something customized to meet your curriculum themes?

We can customize an on-site program to meet your educational requirements while providing an exciting Zoo experience. Some topics for early learners may include, but are not limited to:

- Animal colors
- Animals from specific habitats (e.g. rainforest animals)
- Animal groups: birds, mammals, reptiles, amphibians or invertebrates
- Guided tour through a specific Zoo exhibit or building (guided tours are available September through February)

We can also customize our programs for special needs audiences. To find out more about customized options, please email us at education@phillyzoo.org.

Zoo on-site programs

Available Monday through Friday. Classes can be scheduled at 10:15 a.m., 11:15 a.m., or 12:15 p.m. Capacity is 40 students per class. Over 40 students will be priced as two programs.

Zoo on-site program\$75 plus Zoo admission

Zoo on-site custom program\$100 plus Zoo admission

Early Education programs — let the Zoo come to your classroom with a Tiny Tots or Little Zoo On Wheels

It's never too soon to introduce little ones to the animal kingdom with an unforgettable wildlife encounter.

Tiny Tots:

Ages 1- to 3-years-old

Students learn that birds have feathers, reptiles have scales and mammals have fur. Songs and interactive play give young learners a chance to get close to live animals.

Maximum of 15 children per program.

Tiny Tots programs are 20-minutes in length and offer live animal experiences to connect young children with nature.

Core Concepts: communication, organisms, environment

PA Standards: 3.1.1, 3.2b.5, 3.1.9

Little Zoo On Wheels

Grades Pre-K to 1

Discovery begins with a Little Zoo On Wheels program for your preschool, kindergarten, 1st grade or other early learner groups. The following Early Education programs are 45-minute lessons that engage children with live animals and touchable artifacts.

Fur, Feathers, Scales and Skin

Students become zoo scientists and learn which animals have soft fur, fluffy feathers or shiny scales.

Core Concepts: communication, organisms, environment

PA Standards: 3.1, 3.3, 4.2, 4.6, 4.7

NJ Standards: 5.1, 5.4, 5.5

DE Standards: 1, 6, 7, 8

Eyes, Ears, Nose and Toes

Learn all about animal senses and how they compare with human senses.

Core Concepts: senses, communication, organisms, environment

PA Standards: 3.1, 3.3, 4.2, 4.6, 4.7

NJ Standards: 5.1, 5.4, 5.5

DE Standards: 1, 6, 7, 8

Around the World

Songs, interactive play and live animals round out this imaginary journey to visit ecosystems across the globe.

Core Concepts: organisms, environment, ecosystems

PA Standards: 3.1, 3.2, 3.3, 4.1, 4.6, 4.7

NJ Standards: 5.1, 5.2, 5.3, 5.4

DE Standards: Science 1, 6, 7, 8

Little Zoo On Wheels Seasonal Programs



Learn how animals adapt to seasonal changes in the fall, winter and spring with our seasonal Little Zoo On Wheels programs. Sample topics include: Harvest Critters, Wild about Winter, Backyard Buddies.

Core Concepts: seasons, organisms, ecosystems, adaptations

PA Standards: 3.1, 3.3

NJ Standards: 5.1, 5.2, 5.3, 5.4

DE Standards: 6, 7, 8

Tiny Tots*

Ages 1- to 3-years-old

20-minute program, up to 15 children..... \$250

Any additional same-day Tiny Tots \$100

Little Zoo On Wheels*

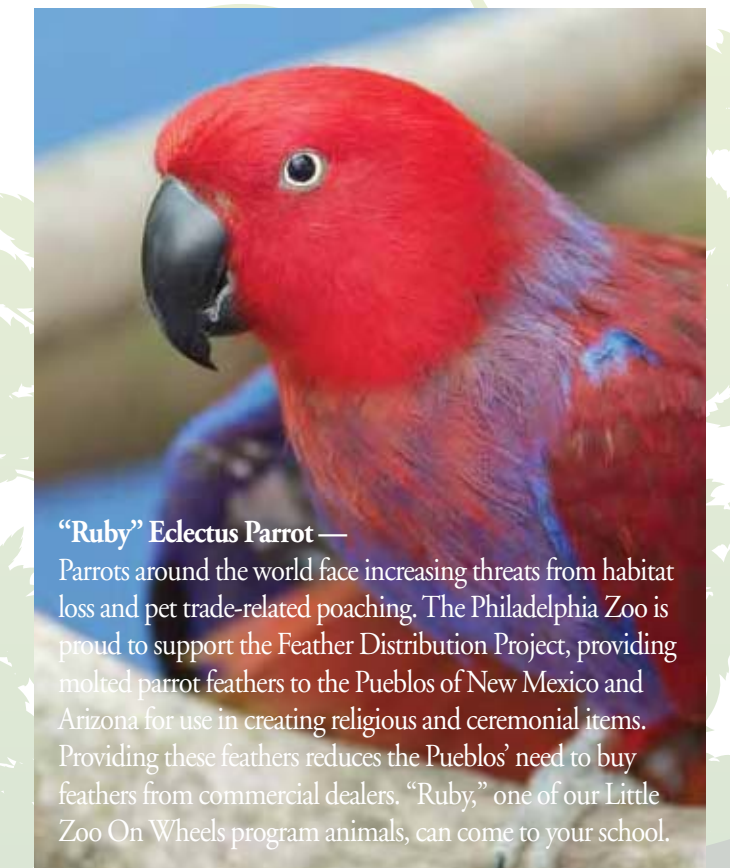
Grades Pre-K to 1

45-minute program, up to 40 children..... \$275

Additional same-day Little Zoo On Wheels \$100

Available all year. Maximum allowable layover between programs is 90 minutes.

**Mileage fees apply. All programs must be paid in full within 3 weeks prior to program date.*



“Ruby” Eclectus Parrot —
Parrots around the world face increasing threats from habitat loss and pet trade-related poaching. The Philadelphia Zoo is proud to support the Feather Distribution Project, providing molted parrot feathers to the Pueblos of New Mexico and Arizona for use in creating religious and ceremonial items. Providing these feathers reduces the Pueblos' need to buy feathers from commercial dealers. “Ruby,” one of our Little Zoo On Wheels program animals, can come to your school.

Call 215-243-5235 to schedule your on-site program today!
Visit our Teachers' Lounge at philadelphiazoo.org for more information.

Call 215-243-5353 to schedule your Tiny Tots or Little Zoo On Wheels program today!

Elementary Education programs at the Zoo enhance your field trip experience.

All Elementary Education programs (grades 1 to 6) are 45-minute lessons and include an up-close live animal encounter and interactive activities. Elementary Education programs are offered Monday through Friday between 10:15 a.m. and 1:00 p.m.

Habits and Habitats

Discover how animals use their unique adaptations to survive in their habitats as we focus on specific biomes around the world.

Core Concepts: habitats, organisms, ecosystems, adaptations

PA Standards: 3.1, 3.3, 4.1, 4.3, 7.1

NJ Standards: 5.5, 5.10

DE Standards: Science 6, 7, 8

Class/Tour Combo Option: 30-minute class followed by a 30-minute guided tour of the Reptile and Amphibian House

Links of Life

Learn about the web of life, food chains and explore how animals in a biome are linked together in their struggle to survive.

Core Concepts: food webs, ecosystems, consumers, producers, decomposers, energy pyramid

PA Standards: 3.1, 3.3, 4.1, 4.3, 4.5

NJ Standards: 5.5, 5.10

DE Standards: Science 6, 7, 8

Class/Tour Combo Option: 30-minute class followed by a 30-minute guided tour of Big Cat Falls



“Isabeau” Douc Langur –

An estimated 20 percent of the world’s most endangered primates, including douc langurs, live in Vietnam. The Philadelphia Zoo is a proud partner of the Endangered Primate Rescue Center in Cuc Phuong National Park, an organization dedicated to the conservation of douc langurs which are threatened by habitat loss, the pet trade and the bushmeat trade. The Philadelphia Zoo is currently the only zoo in the country to exhibit douc langurs. Our male and two females can be found in the Rare Animal Conservation Center.

Customize your program.

Looking for something customized to meet your curriculum themes?

We can customize an on-site program to meet your educational requirements while providing an exciting Zoo experience. Some topics for elementary students may include, but are not limited to:

- Animals from specific habitats (e.g. rainforest animals)
- Animal groups: birds, mammals, reptiles, amphibians or invertebrates
- Guided tour through a specific Zoo exhibit or building (guided tours are available September through February)

We can also customize our programs for special needs audiences. To find out more about customized options, please email us at education@phillyzoo.org.

Zoo on-site programs

Available Monday through Friday. Classes can be scheduled at 10:15 a.m., 11:15 a.m., or 12:15 p.m. Capacity is 40 students per class. Over 40 students will be priced as two programs.

Zoo on-site program\$75 plus Zoo admission

Zoo on-site custom program\$100 plus Zoo admission

Elementary Education programs — let the Zoo come to your classroom with a Zoo On Wheels.

Discover the excitement of the Zoo at your school. This experience helps students become responsible environmental stewards. Live animals and touchable artifacts are the highlight of these 45-minute presentations. Choose a classroom visit for up to 50 people or an auditorium program for up to 300 people.

Born in the USA

Discover habitats and wildlife across North America and learn how our choices can help protect endangered species.

Core Concepts: natural resources, ecosystems, adaptations, endangered species

PA Standards: 3.1, 3.2, 3.3, 4.1, 4.3, 4.5

NJ Standards: 5.1, 5.2, 5.3, 5.4

DE Standards: Science 1, 6, 7 Geography 1, 2

Who’s Who at the Zoo?

Learn about animal classification systems and how animals adapt for survival. This program highlights birds, mammals and reptiles.

Core Concepts: classification, natural systems, endangered species, adaptations

PA Standards: 3.1, 3.2, 3.3, 4.1, 4.3, 4.5

NJ Standards: 5.1, 5.2, 5.3, 5.4

DE Standards: Science 1, 6, 7

Zoo Conservation Lab

Meet live animals and engage in hands-on, action-based science and conservation projects. Also great for afterschool programs.

Core Concepts: science principles, models and theories, science investigation, data analysis, endangered species

PA Standards: 3.1, 3.2, 3.3, 4.1

NJ Standards: 5.1, 5.2, 5.3, 5.4

DE Standards: Science 1, 5, 6, 8

Customize your program.

Looking for something customized to meet your curriculum themes?

Request a custom program for an additional fee. Email zoonwheels@phillyzoo.org or call 215-243-5353 for more information. We can also customize our programs for special needs audiences.

Additional Sample Topics

- Animal groups: birds, mammals, reptiles, amphibians or invertebrates
- Adaptations
- Ecosystems: wetlands, rainforest, grassland or desert

Zoo On Wheels Programs*



Zoo On Wheels Class Visit

Grades 1 to 6

45-minute program, up to 50 students \$275

Additional same-day class visit \$100

Zoo On Wheels Assembly Program

Grades 1 to 6

45-minute program, up to 300 students \$450

Additional same-day assembly program..... \$250

Zoo Conservation Lab

90-minute program, up to 50 students \$300

Zoo On Wheels Customized Program

Grades 1 to 6

45-minute class, up to 50 students \$325

45-minute assembly, up to 300 students \$475

Available all year. Maximum allowable layover between programs is 90 minutes.

*Mileage fees apply. All programs must be paid in full within 3 weeks prior to program date.



“Chewy” Chinchilla — Native to the Andes in South America, wild chinchillas face significant threats from the fur trade and habitat destruction. Although domesticated chinchillas are becoming more common as pets, they require specialized care. “Chewy,” one of our Zoo On Wheels program animals, can come to your school.

Call 215-243-5235 to schedule your on-site program today!
Visit our Teachers’ Lounge at philadelphiazoo.org for more information.

Call 215-243-5353 to schedule your Zoo On Wheels program today!

Middle and High School Education programs at the Zoo enhance your field trip experience.

All Middle and High School programs (grades 6 to 12) are 45-minute lessons and include an up-close live animal encounter and interactive activities. Middle and High School programs are offered Monday through Friday between 10:15 a.m. and 1:00 p.m.

Going, Going, Gone

Take a critical look at the reality of why wildlife is disappearing.

Core Concepts: threatened, endangered, extinct species

PA Standards: 3.1, 4.1, 4.2, 4.3, 4.5

NJ Standards: 5.4, 5.5, 5.10

DE Standards: Science 1, 6, 7, 8

Wildlife and Global Warming

Uncover the impacts of climate change and how it is affecting some of our most vulnerable animal species.

Core Concepts: threatened, endangered, extinct species, biological diversity, population dynamics, natural resources

PA Standards: 4.1, 4.3, 4.4, 4.5

NJ Standards: 5.1, 5.2, 5.3, 5.4

DE Standards: Science 1, 3, 6, 8

Working with Wildlife

Learn about the wide variety of wildlife career opportunities here at the Philadelphia Zoo and beyond.

Core Concepts: conservation, career awareness

PA Standards: 13.1

NJ Standards: 9.3, 9.4



“Amga” Snow Leopard –
Native to the mountains of Central Asia, endangered snow leopards are threatened by illegal hunting, the trade in animal parts and habitat degradation. The Philadelphia Zoo is a proud partner of Snow Leopard Trust, the world’s leading authority on the study and protection of the endangered snow leopard. Our snow leopards can be found in our award-winning Big Cat Falls.

Customize your program.

Looking for something customized to meet your curriculum themes?

We can customize an on-site program to meet your educational requirements while providing an exciting Zoo experience. Some topics for middle and high school students may include, but are not limited to:

- Animal behavioral observations
- Evolution
- Animal groups: birds, mammals, reptiles, amphibians or invertebrates
- Guided tour through a specific Zoo exhibit or building (guided tours are available September through February)
- Behind-the-scenes tours of the Zoo (*priced separately*)

We can also customize our programs for special needs audiences.

To find out more about customized options, please email us at education@phillyzoo.org.

Zoo on-site programs

Available Monday through Friday. Classes can be scheduled at 10:15 a.m., 11:15 a.m., or 12:15 p.m. Capacity is 40 students per class. Over 40 students will be priced as two programs.

Zoo on-site program\$75 plus Zoo admission

Zoo on-site custom program\$100 plus Zoo admission

Middle and High School Education programs — let the Zoo come to your classroom with a Zoo On Wheels.

Zoo experts bring an interactive, educational and engaging experience with live animals. Choose a classroom visit for up to 50 people or an auditorium program for up to 300 people.

Climate Change Alert

Learn how wildlife is impacted by climate change and discover actions steps that can reduce your carbon footprint.

Core Concepts: ecology, fossil fuels, ecosystems, endangered species, sustainability

PA Standards: 4.1, 4.3, 4.4, 4.5

NJ Standards: 5.1, 5.2, 5.3, 5.4

DE Standards: Science 1, 3, 6, 8

Zoo Careers and Career Day Programs

Explore careers in conservation and science such as zoology, field research and environmental education. Meet live animals and learn about the many career opportunities there are for working with wildlife.

Core Concepts: conservation, career awareness

PA Standards: 13.1

NJ Standards: 9.3, 9.4

Zoo Conservation Lab

Students meet live animals and engage in hands-on, action-based science and conservation projects. Also great for afterschool programs.

Core Concepts: science principles, models and theories, science investigation, data analysis, endangered species

PA Standards: 3.1, 3.2, 3.3, 4.1

NJ Standards: 5.1, 5.2, 5.3, 5.4

DE Standards: Science 1, 5, 6, 8

Looking for something customized to meet your curriculum themes?

Request a custom program for an additional fee. Email zoonwheels@phillyzoo.org or call 215-243-5353 for more information. We can also customize our programs for special needs audiences.

Additional Sample Topics

- Citizen science programs focused on migratory birds or amphibians
- Animal behavioral observations
- Animal groups: birds, mammals, reptiles, amphibians or invertebrates
- Ecosystems: wetlands, rainforest, grassland or desert

Zoo On Wheels Programs*

Zoo On Wheels Class Visit

Grades 6 to 12

45-minute program, up to 50 students \$275

Additional same-day class visit \$100



Zoo On Wheels Assembly Program

Grades 6 to 12

45-minute program, up to 300 students \$450

Additional same-day assembly program..... \$250

Zoo Conservation Lab

90-minute program, up to 50 students \$300

Zoo On Wheels Customized Program

Grades 6 to 12

45-minute class, up to 50 students \$325

45-minute assembly, up to 300 students \$475

Available all year. Maximum allowable layover between programs is 90 minutes.

*Mileage fees apply. All programs must be paid in full within 3 weeks prior to program date.



“Hardy” Prehensile-tailed Skink –
Also known as a Solomon Islands skink, this reptile faces serious threats from extensive logging and the illegal pet trade. The Zoo has played a leading role in breeding this species of skink over the past 40 years. Working with the Association of Zoos and Aquariums, the Philadelphia Zoo helps to ensure the sustainability of a healthy and genetically diverse population through a Population Management Plan. “Hardy,” one of our Zoo On Wheels program animals, can come to your school.

Call 215-243-5235 to schedule your on-site program today!
Visit our Teachers’ Lounge at philadelphiazoo.org for more information.

Call 215-243-5353 to schedule your Zoo On Wheels program today!